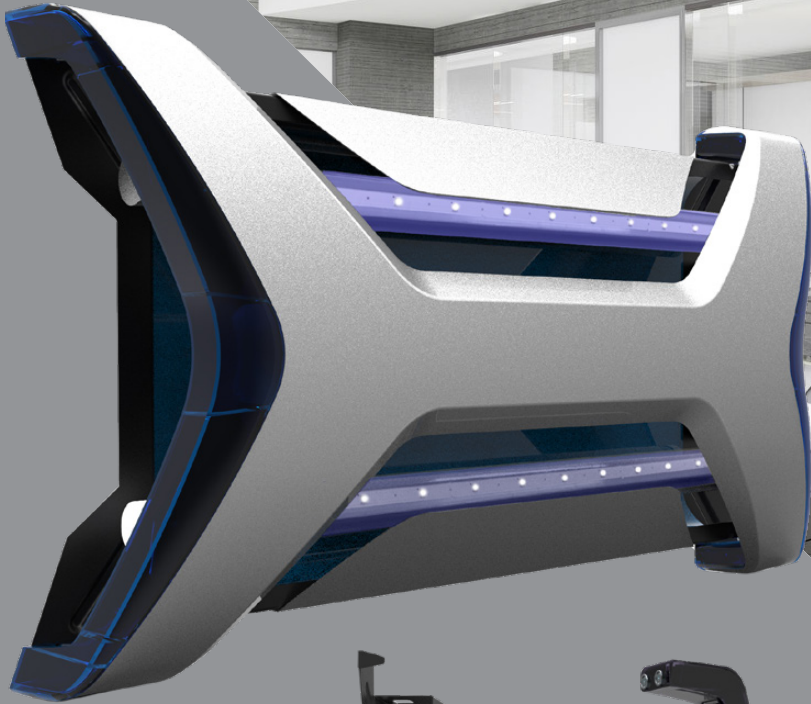


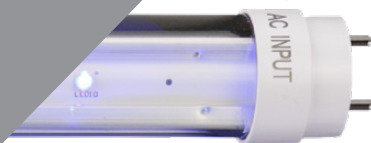
*Executed
with a hinge
mechanism
magnetic
locksystem*



X-TRAP 50² LED

**WALL or CEILING
MOUNTING SYSTEM.**

INSECT
CONTROL
UNIT



With its discreet design, the X-trap 50² LED is recommended for use in shops and restaurants and dry industrial environments.



ALCOCHEM
HYGIENE

Energy saving & effective control go hand in hand

X-trap 50² LED wall mounting system.

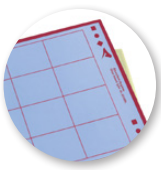
Executed with a hinge mechanism magnetic locksystem the X-trap 50² LED is recommended for use in shops and restaurants and dry industrial environments.

*Easy to service, stylish and effective;
the X-trap 50² LED offers it all.*



LED lamps

LED technology offers clear advantages in terms of efficiency (lower energy consumption) and its footprint (compactness)



Glue boards

Insects are caught on a glue layer, which preserves them over time. The caught insects can be counted and insect species can be analysed, which offers clear advantages in an IPM approach.

Special covers:

For units installed in front of house situations: To avoid that clients have a direct view on the glueboard, which hold the captured dead insects, two metal inlay parts are centrally placed on the unit. These offer clear aesthetic advantages, as they avoid a distasteful view on this glueboard.



Reasons to start using the X-trap 50² LED:

- Robust metal housing
- Energy saving UV-A LED technology offers over 90 kW of savings per unit per year.
- 3 year lifespan (25.000 hrs) of the UV-A LED lamps
- Environmental friendly: no restricted chemicals used in the product design.
- RoHS / REACH / ISO and CB compliant
- Fast and simple maintenance of the unit.
- The glue rail system in the unit can hold differently sized glue boards.
- High quality casing offers over 5 years of operational use
- Fast mounting and fast service

Guarantee on LED lamps: 2 years on electrical failures

Technical specifications

Area coverage	: 50 - 80 m ²
Light source	: 2x 15 Watt Astron UV-A LED lamps
Type of UV lamps	: UV LED Lamps RoHS certified
Electrical supply	: 100-240 V ~ 50-60 Hz
Int. building norm	: acc. IEC-335-259 int. standard for insect exterminators
Catch specifications	: By means of long life glue board
Power consumption	: 22 W
Weight	: 4,5 Kg
Degree of protection	: IP 20 (drip proof)
Guarantee	: 2 year return to base
Lamp life time	: 25.000 hrs (*)
Dimensions (L x D x H)	: 538 x 113 x 311 mm
CE-approval	: Yes
Mounting position	: Wall mounted
Cable	: Included
Packaging	: Export box included
Manual	: Enclosed with the unit in English
Service	: Unit can be dismantled without special tools

() after 25.000 hours a loss of 30% in efficiency has to be expected and lamps need to be replaced*



Executed with a hinge mechanism magnetic locksystem

