

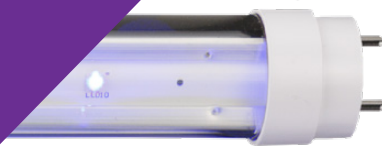
# INSECT CONTROL UNIT



## I-TRAP 30 LED

WALL MOUNTING SYSTEM.

With its innovative design, the i-trap 30 is recommended for use in homes, offices, shops and restaurants. The i-trap is constructed in such a way that the UV-A light is directed upwards.



**ALCOCHEM**  
HYGIENE

# Energy saving & effective control go hand in hand



## i-trap 30 LED wall mounting system.

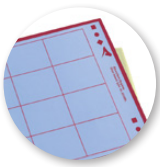
With its discreet design, the i-trap 30 LED is recommended for use in shops and restaurants and dry industrial environments..

*Easy to service, stylish and effective; the i-trap 30 LED offers it all.*



### LED lamps

LED technology offers clear advantages in terms of efficiency (lower energy consumption) and its footprint (compactness)



### Glue boards

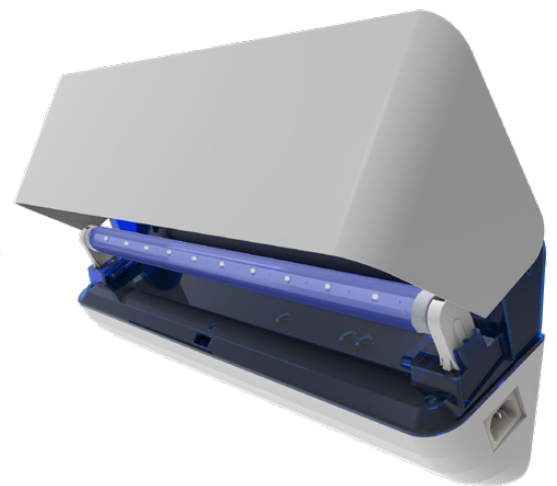
Insects are caught on a glue layer, which preserves them over time. The caught insects can be counted and insect species can be analysed, which offers clear advantages in an IPM approach.

### 10 reasons to start using the i-trap 30 LED:

- Effective & proven design
- Energy saving UV-A LED technology offers over 45 kW of savings per unit per year.
- 3 year lifespan (25.000 hrs) of the UV-A LED lamp
- Environmental friendly: no restricted chemicals used in the product design.
- RoHS / REACH / ISO and CB compliant
- Fast and simple maintenance of the unit.
- Optimized glue board offers fast catch results and a fast analysis
- 2 years of guarantee
- High quality casing offers over 5 years of operational use
- Fast mounting and fast service

## Technical specifications

Area coverage	: 30-50 m <sup>2</sup>
Light source	: 1x 15 Watt Astron UV-A LED lamp
Type of UV lamps	: UV LED Lamps RoHS certified
Electrical supply	: 100-240V ~ 50-60 Hz
Catch specifications	: By means of long life glue board
Power consumption	: 11.5 W
Weight	: 2 Kg
Degree of protection	: IP 20 (drip proof)
Guarantee	: 2 year return to base
Int. building norm	: acc. IEC-335-259 int. standard for insect exterminators
Lamp life time	: 25.000 hrs (*)
Dimensions (L x D x H)	: 494 x 147 x 165 mm
CE-approval	: Yes
Mounting position	: Wall mounted
Cable	: Included
Packaging	: Full color box included
Manual	: Enclosed with the unit in English
Service	: Unit can be dismantled without special tools



(\*) after 25.000 hours a loss of 30% in efficiency has to be expected and lamps need to be replaced